



AFFILIATION NO. 530621

ANNUAL PEDAGOGICAL PLAN

SESSION 2020-21

1. SCHOOL INFORMATION

SARVPALLI PUBLIC SCHOOL
NEAR SDM COMPLEX, SIRSA ROAD, ELLENABAD 125102
C.B.S.E, AFFILIATION NO. 530621
PHONE NO. 9416284691,9416941691,9416341691
Email id- sultansarvps@gmail.com,
Website: www.sarvpallipublicschool.com



Name of the Principal : **Dr. Sultan Hardoo**

Contact No.: 9992001777

Email ID: sultan_sarvps@yahoo.in

School Details:

Year of Affiliation: 2007

Affiliation No.: 530621

School Code: 40685

Type of School(Please tick the correct option):

- Middle/Secondary/Senior Secondary- ✓
- Boys/Girls/Co-Education- ✓
- DaySchool/DayBoarding/Residential-
- No. of Students : 401(Total) 224(Boys) 177Girls)
- Location Type : Urban/Rural/HillyArea: Rural
- Is the School a Minority School? No

OUR VISION

To prepare our children for a rapidly changing world by equipping them with critical thinking skills, global perspective, and respect for human values for today and be prepared for tomorrow.

OUR MISSION

To provide Holistic and Progressive education, in tune with the latest developments in Education, in order to create multitalented citizen with high cultural and moral values with well-honed thinking skill, good communicative abilities and high self-esteem in order to- Explore Inclinations ---Express Thoughts----Nurture Talent----Develop Confidence-- --Identify Dreams----Have 360°Growth.

SLOGAN : Gyanen Aalok Bhawati (ज्ञानेन आलोक भवति)

TAGLINE : “The gateway of innovations”

Number of Students on Roll (Class-wise):2020-21

Class	I	II	III	IV	V	VI	VII	VIII	IX	X
Number of Sections	1	1	1	1	1	1	1	1	2	2
Students on Roll	18	21	30	35	35	23	29	25	42	50

Board Examination data Glance (last year 2019-20)

Class	Number of students appeared	Number of students Passed	Compartment	Fail	Pass percentage
10th	63	57	6	0	100%

Overall School Performance of the Previous Academic Session:

A remarkable achievement in board
(10th examination session 2019-20) results in whole area.

KEY STRENGTHS OF THE SCHOOL

- NON-PROFIT MOTIVE INSTITUTION
- WELL KNOWN FOR DISCIPLINE
- HIGHLY SUCCESSFUL ALUMNI

- LOVING AND CARING ENVIRONMENT
- CALM, NATURAL AND LUSHGREEN CAMPUS

Staff Details:

Group	Principal	Secondary	Primary	Special Educator	PETs	Total
NUMBER	1	6	7	1	1	16

Sarvpalli Public School, Ellenabad

STAFF STATEMENT

S.N	NAME	DESIG.	QUALI.	EXP	PAY SCALE	SALARY & PERKS				TOTAL SALARY
						GP	DA	HRA	MA	
1	SULTAN SINGH	PRIN.	MA, B.Ed, Ph.D.	23	15600- 39100	6100	9114	2170	500	33484
2	SATINDERPAL KAUR	TGT	MA, B.Ed.	3	9300-34800	4600	5838	1390	500	21628
3	RAKESH KUMAR	TGT	MA, B.Ed.	4	9300-34800	4600	5838	1390	500	21628
4	MANN SINGH	TGT	MA, B.Ed.	4	9300-34800	4600	5838	1390	500	21628
5	KHUSHBOO BANSAL	TGT	B.SC.B.ED	1	9300-34800	4600	5838	1390	500	21628
6	SHAIFALY MEHTA	TGT	M.SC.B.ED	1	9300-34800	4600	5838	1390	500	21628
7	RENU JINDAL	TGT	B.TECH.	3	9300-34800	4600	5838	1390	500	21628
8	SUNITA SAINI	PRT	MA, B.Ed.	3	9300-34800	4200	5670	1350	500	21020
9	MD MODASSIR HUSSAIN	PRT	BA, B.ED	6	9300-34800	4200	5670	1350	500	21020
10	MANISHA RAJPOOT	PRT	BA, B.ED	7	9300-34800	4200	5670	1350	500	21020
11	ANU SHARMA	PRT	BA, B.ED	1	9300-34800	4200	5670	1350	500	21020
12	SUSHIL	PRT	MA, B.Ed.	1	9300-34800	4200	5670	1350	500	21020
13	JYOTI RANI	PRT	BA, B.ED	4	9300-34800	4200	5670	1350	500	21020
14	SHANTANU HARDOO	PRT	B.SC, B.ED	1	9300-34800	4200	5670	1350	500	21020
15	MAMTA SIHAG	COUNS.	SPECIAL D.ED	3	9300-34800	4200	5670	1350	500	21020
16	VIKAS	PTI	CP.ED	1	9300-34800	4200	5670	1350	500	21020

ACADEMIC RESOURCES

Name of the Academic Resources Segment -wise

Name of Resource/s	Segment Primary/Sec/	Usefulness
SMART CLASSES	All three segments	Primary, Middle, Secondary students learn everything easily with the help of smart classes
Science Lab	Secondary level Middle Level	Enhances mastery of science subject mater, develops scientific reasoning abilities, develops practical skills, develops understanding of nature Of Science, cultivate interest in science.
Computers	All segments	It helps students to develop the knowledge about the current technology
Reference Books (library)	Middle and Secondary	Students acquire knowledge
Library	All segments	To develop reading habits

2.11 INSTITUTIONAL GOALS

Inter- personal relationship with stakeholders

Annual Goals	<ul style="list-style-type: none"> • Goals setup by C.B.S.E Board will be tried to be achieved by directing the entire focus towards learning process. • To promote innovative pedagogy • To ensure joyful learning at all level • To produce better academic results
Strategies	<ul style="list-style-type: none"> • Previously set strategies to be continued and amended where ever necessary • Extra remedial classes to improve performance of the slow learners.
Long Term Goal	<ul style="list-style-type: none"> • Leading , guiding and supporting the TLP • Ensuring school specific resources for TLP

Details and coordination with Stakeholders

Stakeholder	Methods communication	Ways of involvement
Parents	<ul style="list-style-type: none"> • Social Media • Print Media • Calling • SMS • Student diary 	<ul style="list-style-type: none"> • Parent's Meeting • Parent's Orientation • Programs • Activities

Teaching Staff	<ul style="list-style-type: none"> • Print Media • Social Media • Meetings • Circulars 	<ul style="list-style-type: none"> • Personal Meetings • Discussion
Other Staff	<ul style="list-style-type: none"> • Meetings • Circulars 	<ul style="list-style-type: none"> • Activities
School Managing Committee	<ul style="list-style-type: none"> • Meetings & Circulars 	<ul style="list-style-type: none"> • Monthly Meetings with Staff • Guidance and Controlling
Board	<ul style="list-style-type: none"> • Regular CBSE circulars 	<ul style="list-style-type: none"> • Application of roles and regulations updated on CBSE website
Media	<ul style="list-style-type: none"> • News Papers • Social Media 	<ul style="list-style-type: none"> • Achievements and activities published in newspaper and updated on school's facebook page

PEDAGOGICAL PLAN COMMITTEE

Name	Designation	Role in PPC
Dr. Sultan Hardoo	Principal	Guide/Mentor
Ms. Satinder Pal Kaur	Co-ordinator	Planner
Mr Md Mudasir Hussain	Head of Examination Cell	Planner
Ms. Renu Jindal	IT Incharge	Planner

ACADEMIC RESOURCES

PROCESS IMPROVEMENTS UNDERTAKEN FOR INCREASING EFFECTIVENESS OF THE TEACHING AND LEARNING PROCESS

- Computer-aided teaching ,
- Computerized work-sheets
- Model teaching using audio-Visual Aids.
- Sports Camps & Speech and Drawing competition.
- Inter Class/ Inter House Competitions
- Inter Schools Remedial Teaching for Slow Learners
- Surprise Tests & official Examinations
- Counseling

Morning Assembly Schedule with Themes 2020-21

S.NO	Month	week	Theme	Classes
1	March	III	Save Trees, Save Earth	Secondary
2	April	I	Ideal Students	Middle
3		II	Save Water, Save Life	Primary
4		III	Sharing Learning	Secondary
5		IV	Importance Of Fruits And Vegetables	Middle
6		May	III	Punctuality
7	IV		Magic Words-Thank you	Secondary
8	July	I	Good Manners	Middle
9		II	Give Respect, Take Respect	Primary
10		III	Importance Of Reading	Secondary

11		IV	Cleanliness Is Next To Godliness	Middle
12	August	I	Safety Rules	Primary
13		II	Avoid Junk Food	Secondary
14		III	Stop Playing Online Games	Middle
15		IV	Play Outdoor And Keep Fit	Primary
16		V	Discipline	Secondary
17		September	I	The Importance Of Home Work
18	II		Magic Word-Excuse Me	Primary
19	III		Proud To Be An Indian	Secondary
20	October	III	Be Polite To Your Mother	Middle
21		IV	Never Give Up	Primary
22	November	II	Work Is Worship	Secondary
23		III	Healthy Tips To Become Responsible	Middle
24		IV	Save School Property	Primary
25	December	II	Friendship And Forgiveness	Secondary

STUDENT DEVELOPMENT PLAN

Classroom Observation Schedule		
Classroom Observation Schedule	Frequency	Done By
English Classes	Twice a Month	1.Principal 2.Senior Teacher
Math's Classes	Twice a Month	1.Principal 2.Senior Teacher
Hindi Classes	Twice a Month	1.Principal 2.Senior Teacher
Punjabi Classes	Twice a Month	1.Principal 2.Senior Teacher
Science Classes	Twice a Month	1.Principal 2.Senior Teacher
SST Classes	Twice a Month	1.Principal 2.Senior Teacher

SARVPALLI PUBLIC SCHOOL, ELLENABAD

Date- sheet for online PT-1 (Aug.-2020)

Date	Day	Classes/ Time									
		1st	2nd	3rd	4th	5th	6th	7th	8th	9th	10th
26/8/2020	Wednesday	EVS	-	-	-	Maths	Maths	Maths	Science	Science	Science
27/8/2020	Thursday	Hindi	Maths	Maths	Maths	Science	Science	Science	-	-	-
28/8/2020	Friday	Maths	Hindi	Hindi	Hindi	-	-	-	English	English	English
31/8/2020	Monday	-	E.V.S	E.V.S	E.V.S	-	-	-	S.st	S.st	S.st
1/9/2020	Tuesday	-	-	-	-	Hindi	Hindi	Hindi	-	-	-
2/9/2020	Wednesday	-	-	-	-	-	Punjabi	Punjabi	Hindi	Hindi	Hindi
3/9/2020	Thursday	-	English	English	English	-	-	-	Punjabi	Punjabi	Punjabi
4/9/2020	Friday	-	-	-	-	S.st	S.st	S.st	-	-	-
7/9/2020	Monday	English	-	-	-	English	English	English	Maths	Maths	Maths

SARVPALLI PUBLIC SCHOOL, ELLENABAD

Exam schedule of Half Yearly, 2020-21

Date	Day	1st	2nd	3 rd	4 th	5th	6th	7th	8th	9th	10th
10.10.2020	Saturday	-	-	-	-	GK	GK	GK	GK	-	-
11.10.2020	Sunday	Sunday									
12.10.2020	Monday	Eng	EVS	Math	EVS	Math	Science	SSt	SSt	Science	Math
13.10.2020	Tuesday	Preparatory Holiday									
14.10.2020	Wednesday		Hindi	Eng	Hindi		Hindi	Eng	Hindi	Hindi	Pbi
15.10.2020	Thursday	Preparatory Holiday									
16.10.2020	Friday	Math	Eng	Hindi		Eng	SSt	Math	Science	Math	English
17.10.2020	Saturday	Drwaing/ GK	Drawing/ GK	Drawing/ GK	Drawing/ GK	Comp/ Drawing	Comp/ Drawing	Comp/ Drawing	Comp/ Drawing		

18.10.2020	Sunday	Sunday										
19.10.2020	Monday	Prepratory Holiday										
20.10.2020	Tuesday	EVS	Math	EVS	Math	SST	Math	Science	Math	SST	Science	
21.10.2020	Wednesday	Prepratory Holiday										
22.10.2020	Thursday	Hindi			Eng	Hindi	Eng	Pbi	Eng	Pbi	SSt	
23.10.2020	Friday	Prepratory Holiday										
24.10.2020	Saturday	-	-	Comp	Comp	Science	Pbi	Hindi	Pbi	Eng	Hindi	

SARVPALLI PUBLIC SCHOOL, ELLENABAD

Exam Schedule for PT-II (Nov.-2020)

Date	Day	1st	2nd	3 rd	4th	5th	6th	7th	8th	9th	10th
11.11.2020	Wednesday	Maths	English	Holiday	Maths	Maths	English	S.Sci	Maths	Maths	S.Sci
12.11.2020	Thursday	Holiday	Holiday	Holiday	Holiday	Holiday	Holiday	Holiday	Holiday	Holiday	Holiday
13.11.2020	Friday	English	EVS	Maths	English	Science	Maths	Science	English	English	Science
16.11.2020	Monday	Holiday	Hindi	Hindi	Holiday	Hindi	Pbi	Pbi	Hindi	Holiday	Pbi
17.11.2020	Tuesday	Holiday	Holiday	Holiday	Holiday	Holiday	Holiday	Holiday	Holiday	Holiday	Holiday
18.11.2020	Wednesday	EVS	Maths	English	EVS	S.Sci	Science	English	S.Sci	Science	English
19.11.2020	Thursday	GK	Holiday	Comp/GK	Hindi	Holiday	Comp/GK	Hindi	Pbi	Hindi	Holiday
20.11.2020	Friday	Hindi	GK	EVS	Comp/GK	English	S.Sci	Maths	Science	S.Sci	Maths
21.11.2020	Saturday					Comp/GK	Hindi	Comp/GK	Comp/GK	Pbi	Hindi

SARVPALLI PUBLIC SCHOOL, ELLENABAD

Date sheet for Final examination

Date	Day	1st	2nd	3rd	4th	5th	6th	7th	8th	9th
15.03.2021	Monday	English	Maths	EVS		Science	SST	Maths	Science	Maths
16.03.2021	Tuesday	Preparatory Holiday								
17.03.2021	Wednesday	GK/ Drawing		Hindi	GK/ Drawing	Hindi	GK/ Computer	Punjabi	Hindi	
18.03.2021	Thursday	Preparatory Holiday								
19.03.2021	Friday	Preparatory Holiday								
20.03.2021	Saturday	EVS	English	Maths	EVS	English	Maths	English	SST	English
21.03.2021	Sunday	Sunday								
22.03.2021	Monday		Hindi	Computer	Computer	Computer/ GK	Punjabi	Hindi	Computer/ GK	Punjabi
23.03.2021	Tuesday	Preparatory Holiday								
24.03.2021	Wednesday	Preparatory Holiday								
25.03.2021	Thursday	Maths	EVS	English	English	Maths	Science	SST	English	Science
26.03.2021	Friday	Preparatory Holiday								
27.03.2021	Saturday	Hindi	GK/ Drawing		Hindi		Hindi	GK/ Computer	Punjabi	Hindi
28.03.2021	Sunday	Sunday								
29.03.2021	Monday	Preparatory Holiday								
30.03.2021	Tuesday	-	-	GK/ Drawing	Maths	SST	English	Science	Maths	SST

Assessment

Purposes of Assessments:

- A) To identify the children's learning needs;
- B) To help the teacher plan educational programmes for the children;
- C) To indicate which specific educational objectives have or have not been achieved;

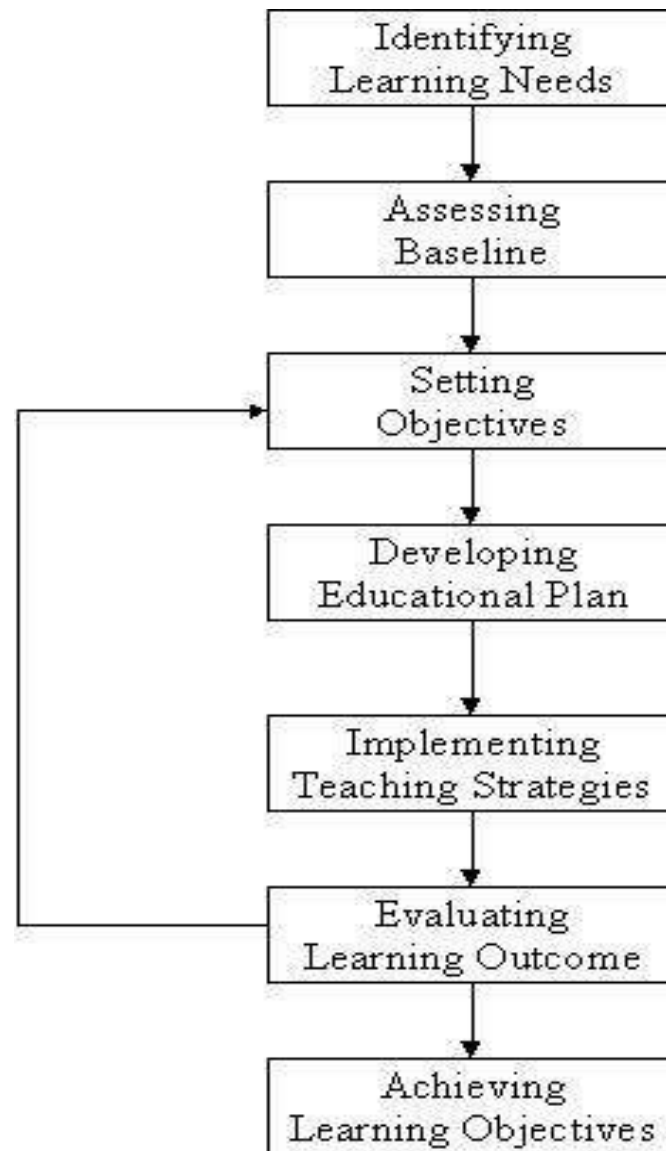
D) To serve as continuous evaluation.

Process in Assessment:

- A) Identifying the children's learning needs;
- B) Assessing the children's baselines in specific subjects and establishing their pre-requisite skills;
- C) Setting learning objectives;
- D) Implementing curriculum programmes;
- E) Evaluating the effectiveness of curriculum programmes & Making adaptations to curriculum programmes.

Assessment Flow Chart

The following flow chart will be use to illustrate the assessment process.



Methods of Assessment

When evaluating the children's performance in terms of specific criteria set, the teacher will analyse the curriculum and the method of instruction used before he /she can develop appropriate assessment to identify the children's learning needs.

The assessment will be in the form of checklists, paper-pencil tests interviews or observation of the children engaged in activities. They should be individually administered both at the beginning and at the end of the teaching period, so that the children's progress can be measured. The assessment results will then reflect the children's strengths and weaknesses. Assessment is thus an important part of the teaching process.

Focus on Entire Student learning activities.

Value education has been mainly expressed in terms of development of values and virtues like honesty, self-control, respect, responsibility, loyalty for personality/character development of the individual per se without situating them in the prevailing social, cultural realities and conditions. Values should not be treated as ideal concepts but as 'empowering tools' which are helpful in meeting the challenges of the contemporary social world-be it religious fundamentalism, environmental degradation multi-cultural conflicts, misuse of science and technology, inequalities, ill effects of mass media, globalization, commercialization and so on.

From broader perspective, the aim of value education is linked with the fundamental question of what education itself is meant for. From individual's perspective, the purpose is to enable students achieve personal fulfillment for success in life and work. From societal perspectives, education aims to prepare young people to contribute to the society/nation and world around. In neither case however, education is to be perceived as an outcome but as an experience in itself, which will enable student to live safe, healthy and fruitful life and become responsible citizens who make positive contributions to the society.

SYSTEM OF ASSESSMENT & EXAMINATION (CLASS I - X)

	TERM – 1 (1 st half of the session) 20 marks Periodic Test+80 marks for Half Yearly Exam		TERM – 2 (2 nd half of the session) 20 marks Periodic Test +80 marks for Half Yearly Exam	
ENGLISH	PA 20 marks	Yearly Exam Written Exam for 80 marks	PA 20 marks	Yearly Exam Written Exam for 80 marks with syllabus coverage as below: Class I to V: entire syllabus of 2 nd term. Class VI: 10% of 1 st term covering significant topics+entire syllabus of 2 nd term. Class VII: 20% of 1 st term covering significant topics+entire syllabus of 2 nd term. Class VIII: 30% of 1 st term covering significant topics+entire syllabus of 2 nd term Class IX & X: Entire syllabus
HINDI	-Periodic Test 10 marks		-Periodic Test 10 marks	
PUNJABI	-Notebook submission		-Notebook submission	
MATHEMATICS	5 marks at term end		5 marks at term end	
SCIENCE	-Subject Enrichment		-Subject Enrichment	
SOCIAL SCIENCE	5 marks at the term end		5 marks at the term end	
COMPUTER				

Subject Enrichment Activities

These are subject-specific activities aimed at enhancing the understanding and skill of the students. These activities are to be carried out throughout the term; however, they should be evaluated at the term-end.

- **Languages:**

Aimed at equipping the learners to develop effective listening and speaking skills. The language teachers will devise their own methods and parameters for assessment of the language.

- **Mathematics:**

For the activities in mathematics, Practical work and activities in Maths will be undertaken as suggested by the NCERT syllabus and textbooks.

- **Science:**

Practical work and activities in Science will be undertaken as suggested by the NCERT Syllabus and textbooks.

- **Social Science:**

Map or the project work will be undertaken as suggested by the NCERT syllabus and textbooks.

Grading Scale for Scholastic Areas (Classes I to VIII) (School will award grades as per the following gradingscales)		Grading Scale for Scholastic Areas (Classes IX to X) (School will award grades as per the following grading scales)	
<u>Mark Range</u>	<u>Grade</u>	<u>Mark Range</u>	<u>Grade</u>
91-100	A1	91-100	A1
81-90	A2	81-90	A2
71-80	B1	71-80	B1
61-70	B2	61-70	B2
51-60	C1	51-60	C1
41-50	C2	41-50	C2
33-40	D	33-40	D
32 & BELOW	E (needs improvement)	32 & BELOW	E (Failed)

Performance of Measurement

System of monthly review will be there

Monthly Review I	Status of goals set to be checked
Monthly Review II	Follow up on the previous review report
Monthly Review III	Specific feedback from area of improvement
Monthly Review IV	Reviewing improvement action plan
Monthly Review V	Feedback from Student and Parents.

ACTIVITY CALENDER SESSION 2020-2021

APRIL-2021

MONDAY	TUESDAY	WEDNESDAY	THURSDAY	FRIDAY	SATURDAY	SUNDAY
		1	2 Ram Navami	3	4	5
6 Mahavir Jayanti	7 Spl. Assembly on World Health Day	8	9	10 Good Friday	11	12
13 Spl. Assembly on Baisakhi	14 Dr. B. R. Ambedkar Jayanti	15	16	17	18 Spl. Assembly on World Heritage Day + Poster Making Comp. 5 th – 10 th	19
20	21 Spl. Assembly on National Girl Service Day	22 Spl. Assembly on World Earth Day	23 Spl. Assembly on World Book and Copyright Day	24 Spl. Assembly on Panchayat Raj Day	25 Spl. Assembly on World Intellactual Property Day	26
27	28	29 Spl. Assembly on World Dance Day	30			

MAY-2021

MONDAY	TUESDAY	WEDNESDAY	THURSDAY	FRIDAY	SATURDAY	SUNDAY
				1 Spl. Assembly on Labour Day	2 World Press Freedom Day + World Asthma Day	3
4	5 Spl. Assembly on World Laughter Day	6	7 Spl. Assembly on World's Atheletics Day	8 Spl. Assembly on World's Red Cross Day	9	10
11	12	13	14	15 Spl. Assembly on International Family Day	16	17 World Telecom Day
18	19	20	21	22	23 Spl. Assembly on Common Wealth Day	24 Common Wealth Day
25 Idul Fitr	26 Spl. Assembly on Martyradom Day of Sri Guru Arjun Dev ji	27	28	29	30 Spl. Assembly on Anti Tobacoo Day	31

JUNE-2021

MONDAY	TUESDAY	WEDNESDAY	THURSDAY	FRIDAY	SATURDAY	SUNDAY
1 World Milk Day	2	3	4	5 World Environment Day	6	7
8	9	10	11	12	13	14 World Blood Donor Day
15	16	17	18	19	20	21 International Day of Yoga
22	23	24	25	26	27	28
29 National Statistics Day	30					

JULY-2021

MONDAY	TUESDAY	WEDNESDAY	THURSDAY	FRIDAY	SATURDAY	SUNDAY
		1 Spl. Assembly on Doctor's Day	2 Spl. Assembly on Van Mahotsav Day	3	4	5
6	7	8	9	10	11 Spl. Assembly on World Population Day	12
13	14	15	16	17	18 Inter House Speech Competition Day	19
20	21	22	23	24	25 Spl. Assembly on Kargil Victory Day	26
27	28	29	30	31 Spl. Assembly on Martyrdom Day of Shaheed Udham Singh		

AUGUST-2021

MONDAY	TUESDAY	WEDNESDAY	THURSDAY	FRIDAY	SATURDAY	SUNDAY
					1 Id-ul-Zuha (Bakrid)	2
3 Raksh Bandhan/Rakhi Making comp.	4	5	6	7	8	9
10	11	12 Karishna Janamashtami	13	14 Spl. Assembly on Independence Day	15 Independence Day	16
17	18	19	20	21	22	23
24	25	26 Online PT-I Started	27	28	29	30
31						

SEPTEMBER-2021

MONDAY	TUESDAY	WEDNESDAY	THURSDAY	FRIDAY	SATURDAY	SUNDAY
	1	2	3	4	5 Spl. Assembly on Teacher's Day	6
7 Online PT-I Ended	8 Spl. Assembly on International Literacy Day	9	10	11	12	13
14	15	16	17	18	19	20
21	22	23	24	25	26	27
28	29	30				

OCTOBER-2021

MONDAY	TUESDAY	WEDNESDAY	THURSDAY	FRIDAY	SATURDAY	SUNDAY
			1	2 Gandhi Jayanti	3 World Nature Day	4 World Animal Welfare Day
5 World Teacher Day	6 World Wild Life Day	7	8 Spl. Assembly on Air Force Day	9	10 Half Yearly Started	11
12	13	14	15	16	17	18
19	20	21	22	23	24 Half Yearly Ended	25
26	27	28	29	30 Spl. Assembly on Rashtriya Ekta Diwas + Science Fair 5 th to 10 th	31 Maharishi Valmiki Jayanti	

NOVEMBER-2021

MONDAY	TUESDAY	WEDNESDAY	THURSDAY	FRIDAY	SATURDAY	SUNDAY
						1
2	3	4	5	6	7 Spl. Assembly on World Cancer Awareness Day	8
9	10	11 Spl. Assembly on National Education Day PT- II Started	12	13 Diwali Celebration Rangoli, Diya & Candle Comp	14 Children's Day Diwali	15 Vishavkarma Day
16	17	18	19 Spl. Assembly on National Integration Day	20	21 PT- II Ended	22
23	24	25	26	27	28 Inter House Games Competition 5 th to 10 th	29
30 Birthday of Sri Guru Nanak Dev Ji						

DECEMBER-2021

MONDAY	TUESDAY	WEDNESDAY	THURSDAY	FRIDAY	SATURDAY	SUNDAY
	1 Spl. Assembly on World Aids Day	2	3	4 Spl. Assembly on Indian Navy Day	5	6
7	8	9	10 Spl. Assembly on Human Rights Day	11 Spl. Assembly on UNICEF Day	12	13
14	15	16 Spl. Assembly on Vijay Diwas	17	18	19	20
21	22	23	24 Spl. Assembly on Consumers Day	25	26	27
28	29	30	31			

JANUARY-2022

MONDAY	TUESDAY	WEDNESDAY	THURSDAY	FRIDAY	SATURDAY	SUNDAY
				1	2 PT-III Started	3
4	5	6	7	8	9 Spl. Assembly on Laughter Day PT-III Ended	10 Laughter Day
11	12 Spl. Assembly on National Youth Day	13 Lohri	14 Makkar Sakranti	15	16	17
18	19	20	21	22	23	24
25	26 Republic Day	27	28	29	30	31

FEBRUARY-2022

MONDAY	TUESDAY	WEDNESDAY	THURSDAY	FRIDAY	SATURDAY	SUNDAY
1	2	3	4 Spl. Assembly on World Cancer Day	5	6	7
8	9	10	11	12	13	14
15	16	17	18	19	20 Spl. Assembly on International Mother Language Day	21 International Mother Language Day
22	23	24	25	26	27	28

MARCH-2022

MONDAY	TUESDAY	WEDNESDAY	THURSDAY	FRIDAY	SATURDAY	SUNDAY
1	2	3	4 Spl. Assembly on National Security Day	5	6	7
8 Spl. Assembly on International Woman Day	9	10	11	12	13	14
15 Final Exam Started	16	17	18	19	20	21
22 Spl. Assembly on World Water Day	23	24	25	26	27	28
29	30 Final Exam Ended	31				

SARVPALLI PUBLIC SCHOOL, ELLENABAD

Affiliated to CBSE, New Delhi vide No. 530621

CLASS – I

MONTH/ SUBJECT	APRIL	MAY	JUNE	JULY	AUGUST	SEPTEMBER	OCTOBER	NOVEMBER	DECEMBER	JANUARY	FEBRUARY	MARCH
MATHS (Math Magic)	Ch-1, 2 Table 2, 3	Ch-3, Table 2, 3, 4	Ch-4, Table 5	Ch—5,6 Table 6, 7	Ch-7, Table 6, 7, 8	Ch-8, Table 7, 8, 9	Ch- 9, Table 9,10	Ch-10, 11 Table 8, 9, 10	Ch-12,13, Table 2-10	REVISION	Pre Testing For Annual Exam	ANNUAL EXAMINATION
ENGLISH (Marigold,Rai ndrops)	Ch - 1,2One and Many Substitu tion Table.	Ch-3, 4, Noun, Essay (My Self), Picture composition (An Ice Cream)	Ch-5, Use of a, an, Use of verbs	Ch-6,7, 8 Picture compositio n (Room), Essay (My School),	Ch-9, 10, Picture compositio n (Lap top),	Ch- 11, 12, 13 Pronouns,	Ch- 14, 15 Picture composition (A classroom), Application (Sick Leave)	Ch-15,16, 17 Adjective, Essay (My teacher)	Ch-18, 19, 20 Use of in on, under behind, Essay (My friend)			
EVS (Our Green Earth 1)	Ch-1,2	Ch-3,4	Ch-5,6	Ch-7,8	Ch-9,10	Ch-11, 12	Ch-13, 14	Ch- 15	Ch- 16			
HINDI (Rimjhim)	ikB & 1]2] o.kekyk	ikB & 3] 4 5] ,d ;k vusd] jxk d uke]	ikB & 6, 7 opu	ikB & 8] 9] ek=k, ¼vk] b] b dhek=k] Qykds uke] fyax	ikB & 10, 11] 12] ek=k, ¼m] Å½ laKk uke okys 'kCn] fxurh ¼,d ls nt½	ikB&13, 14 i'kvk d uke]	ikB&14]15]16] fnuk d uke ek=k, ¼,] >¼] vk ½] folksk.k	ikB & 17] 18] 19] 20] ek=k, vk] vk] foykse'kCn]	ikB & 21, 22, 23 ek=k, v%] v]] fxurh X; kjg lchl			
PUNJABI (Ri shma Punjabi Path Pustak 1) (Rishma Punjabi vyakarn 1)	pwT-1, puiL Mg- iesqr[, iL Mg	pwT-2, ie`k vcn, bhuvcn, ivroDI Sbd[pwT- 3,4, zrUrI kMm dl Cu`tl LeI ibn p`qr	pwT-5,6 ASD-SD, myrw inqnym,	pwT- 7,8, Sbd, nllv, Lyk- myrw mnpsld PL[pwT- 9, 10, vuk, khwxl- Syr qy cUhl,	pwT-11,12, muhwvry, blmwrl dl Cu`tl LeI p`qr[pwT-13,14,15 boll jW BwSw, iL`pl, Lyk-holl	pwT-16, vrn jWvrnmwLw, LgW mwwqrw, LgWKr, Lyk- brsiq dl ru`q[

<p>HINDI(rimj him,nyee kiran)</p>	<p>ikB 1] ikB 2] Hkk'kk vkj 0;kdj.k] o.kfopkj] opu 1 ls 15] fyax 1 ls 15 o.k la;ksx vkj orZuh 1 ls 15]fuca/k%vkn' kfon;kFki] ekrk fir^k dh lsok] izkFizuk i= % fo ky; es ikuh ihu dh mfpr O;oLFkks fy,]dgkuh% prj jtkk</p>	<p>ikB 3] laKk] i;k;okph 1 ls 10] foykse 1 ls 15] vusd 'kCnksa ds fy, ,d 'kCn 1&15]fucalk % le; dk lni;ksx] lepkj i=]i= % egqYys dh lQ^{kbZ} O;oLFkks ds fy, uxj fuxe vf/kdkjh dk i=A</p>	<p>ikB 4] 5] 'kCnfopkj] okD; fopkj] opu 16 l 30] i;k;okph 11 ls 20] i= %&ijh{kk es izFke vkus ij fe= dk c/kkbZ i=]</p>	<p>ikB 6] louke] fo'ks'k.k] vusdkFkd 'kCn 1 ls 10]fHkUukFid 'kCn 1 ls 10]fuac/k % o`{kkjksi.k] fo kFkh vkj vu'kklu]Qh l eqvQh d fy, izkFkuk i=A</p>	<p>ikB 7] ikB 8] egqkojs 1 ls 12] yksdkfDr;k 1 ls 6] vifBr x ka'k] fyax 16 ls 30],dkdFkd irhr gksus oky'kCn] fucalk %& gekjh jk"v^a Hkk'kk fgUnh] dgkuh %&dy cusxk ?kj] bZekunkj ydM+gkj</p>	<p>ikB 9] 10] dky] laokn ys[ku] 'k) &v{kq)] vud 'kCnksa ds fy, ,d 'kCn] fucU/k %& nhikoyh] lSd'ku cnyoku dfy, izkFkuk i= fy[kA</p>	<p>ikB 11] ikB 12]dkjd] 'kCn jpuk] opu 31 ls 45]fyax %& 31 ls 45] fucU/k %& esjk Hkkjr egku]izkFkuk i=@i= %& ekrk th dh dq'kyrk dk lepkj nsrs gq, i= fy[kA</p>	<p>ikB 13] ikB 14] ikB 15] okP;] vfodkjh 'kCn] fojke fpUg] egkkoj 13 ls 25] yksdkfDr;k 7 ls 15] vifBr x ka'k 4] 5] fyax % 46 ls 60] opu 46 ls 60] foykse 16 ls 35] fucalk %& inq'k.k] Jh x= vejnkl th] izkFizuk i= % Nk=o'fr izklr djus gsrq eq[;k/kfidk dk izkFizuk i=A i= % vkids tUefnu ij pkpk n-kjk Hksts migkj ds fy, /kU;okn i=Adgkuk csesy fe=rkA</p>	<p>ikB 16] ikB 17] laf/k] lek] vusd 'kCnksa ds fy, ,d 'kCn] Hkkookpd lakk 1 ls 20] fHkUukFid 'kCn 11 ls 20] vusdkFkd 'kCn 11 l20] fucalk %& x.kr= fno] dgkuh % >wBk xMfj;k] ikFizuk i= % {kek ;kpuk ds fy, vius e[;k/kfidk dk izkFkuk i=A ykÅMLihdj<i>k</i> ij ikcUnh yxku ds fy, ftyk vf/kdkjh dki=A</p>			
--	--	---	--	--	---	--	--	---	--	--	--	--

<p>PUNJABI(R ishma Punjabi Path Pustak 5, Punjabi vyakarn ate lekh rachna5)</p>	<p>gkm 1, gkm 2, Gk;ak ns/ ftnkeoB, Bkt, fbr pdb (1 s 15), tuB pdb (1 s 15), nPX^PX (1^15), b/y L ;h r[o BkBe dt ih, gso L iowkBk wnkchbJh fpB? gZso</p>	<p>gkm 3, gkm 4, ftoXh ; apd (1^15), ; wkBkoEe ; apd (1^10), wjtkto (1^10),ejkD hL fdnkb okii, gso L fgsk ih s' g'; wzrtkTD bJhgso</p>	<p>gkm 5,6, fbghns/ toBwkbk, pj[s/ ; apdK dh EK fJe ; pd (1^10), n;X^;X (16^30), fbr (16 s' 30), ftoXh ; apd (16 s' 30), gok ouBk nkdo; ftfdnkoEh,b y L efgTNo,</p>	<p>gkm 7, gVBkt , nyo pX, tuB (16 s' 30), pj[s/ ; apdK dh EK fJe ; apd (11 s' 20), ; wkBkoEe ; pd (11 s' 20),gso L s[jkvk fwZso giith iwks ftu'gk; j' frnk T; B[tXkjhgso fby -</p>	<p>gkm 8, gkm 9, ; apd p'X, wjtkto(11 s' 20), nr/so (1 s' 10), fgS/so (1 ^ 6),by L;szsok fdt; , ejkDh L pKdo ns/ wrowZS</p>	<p>gkm 10, 11, brK s/ brkyo , fefonk, fbr (31 s' 45), g'okouBk ^ wB'o iB,</p>	<p>gkm 12, gkm 13, tuB (31 s' 45), pj[s/ ; pdK dh EK fJe ; apd (21 s' 30), nPX^PX (31 s' 45), b/y L d; fjok, gZso L fg; hgb ; kfjp B ; e; ab pdbD bJh gso fby -</p>	<p>gkm 14, gkm 15, gkm 16, gkm 17, wjtkto (21 s' 30), ; wkBkoEe ; pd (21 s' 30), ftoXh ; pd (31^45),nPX^PX (46^60), ft; ; D, by L fdtkbh, ejkDh L fpZbh d rb NbhED pBQ -</p>	<p>gkm 18, gkm 19, gkm 20, tke pX, ekb, nr/so (11 s' 21), fgS/so (7 s' 11), fbr (46 s' 60), tuB (46 s' 60), pj[s/ ; apdK dh EK fJe ; apd (31 s' 40), wjtkto (31 s' 40) ; wkBkoEe ; pd (31 s' 40), ftoXh ; pd (46 s' 60), b/y - ; ckJh dk wjZst, ejkDh - tgkoh ns/ysk, gZso - nkgD/ fwZso B[tvh GD d/ ftnkj s/ ; dk gso fby -</p>		
--	--	--	---	---	---	---	---	--	---	--	--

SARVPALLI PUBLIC SCHOOL, ELLENABAD

Affiliated to CBSE, New Delhi vide No. 530621

CLASS-X

MONTH/ SUBJECT	APRIL	MAY	JUNE	JULY	AUGUST	SEPTEMBER	OCTOBER	NOVEMBER	DECEMBER	JANUARY	FEBRUARY	MARCH
MATHS(NC ERT)	Ch-1 (few topics), Ch-2 (few topics)	Ch-3 (few topics), Ch-4 (few topics)	Ch-5 (few topics),	Ch-7 (few topics), Ch-11 (few topics)	Ch-8 (few topics), Ch-9,	Ch-15	Ch-12 (few topics), Ch-13 (few topics)	Ch-10, Ch-14 (few topics)	Ch-6 (few topics)			
ENGLISH(N CERT)	1.A triumph of surgery (S), 2. The thief's story (S), 1. A letter to god (T), 2. Fire and Ice (P), Grammar:- Tense	2. Nelson Mandela (T), 1. Dust of snow(P), 3. Two stories about flying (T), Grammar:- Modals	4. From the diary of Anne Frank (T), 4. A tiger in the zoo. (P), 5. Footprint s without feet(S),	6.The making of a scientist(S), 5.The hundred dresses-I (T), 6. The hundred dresses-II(T), 5.The ball poem, (P), 6. Amanda (P).	7. The Necklace(S), 7. Glimpser of India(T), 7. Animals(P),G rammar:- Subject verb concorte.	. The trees(P). 8.The Hack driver(S), . Bholi(S), 8.Mijbis the otter(T),	9. Madam rides the bus(T), 10. The tale of custard the dragon(P), Grammar:- Determiners	0. The sermon at benaras(T), 1. The proposal(T), 11. For Anne Gregory(P), Grammar:- Reporting	REVISION			
S.S.T(NCERT)	Geo- L-1, Eco- L-1	History- L- 1, Geo-L-2 (only Map), Civics-L-1,	Eco-L-2, Geo- L-3,	Civics- L-2, Eco- L-3	History- L-2, Geo- L-4 (only Map), Civics- L-3,	Geo- L-5, Eco- L-4	Civics- L-4, Eco- L-5	Geo-L-6, Civics- L-5, L-6	Civics-7.			
SCIENCE(N CERT)	Ch-1	Ch-2, Ch-6,	Ch-15,	Ch-10, Ch-11 (few topics)	Ch-3 (few topics), Ch-4 (few topics),	Ch-16	Ch-8, Ch-5	Ch-12, Ch-13 (few topics)	Ch-9 (few topics)	Full Revision	REVISION	ANNUAL EXAMINATION

**WHOLE SCHOOL
RUBRIC**

ELEMENTS		LEVEL 1	LEVEL 2	LEVEL 3	LEVEL 4
TEACHING & LEARNING	Personalized Learning	Knowledge and understanding of how students learn is demonstrated by a minority of teachers	Knowledge and understanding of how students learn is emergent in teacher practice. Individual and/or teams of teachers are planning new approaches to teaching and learning.	Knowledge and understanding of how students learn is demonstrated by the majority of teachers. Most teachers have developed and implemented practices that put students at the centre of the learning process.	Knowledge and understanding of how students learn is evident in the practice of all teachers through a broad repertoire of student-centred teaching strategies and assessment methods
		Initial work is being undertaken to gather data on the individual learning styles of students at a year level	Data on the individual learning styles of students has been used to inform planning for the way in which teaching practices can be aligned to the learning needs and goals of individual students.	Pedagogical practice is informed by data and aligned to the learning needs and goals of individual students at certain year levels	Pedagogical practice is aligned to the learning needs and goals of individual students across the whole school
	Curriculum	Curriculum is usually designed by individual teachers based on the year level and associated subjects.	Teachers plan together to provide consistency of curriculum that reflects the stages of learning and student backgrounds and addresses the needs of particular cohorts of students.	Curriculum planning and practices reflects the achievements of students in relation to the standards for some domains, stages of learning and student backgrounds and perspectives.	All curriculum planning and practices analyses and addresses the full range of learning needs of individual students providing coherence, balance and continuity across all of the domains.
		Domains are connected in an ad hoc manner when planning learning experiences.	Domains are being combined when planning learning experiences for students.	Many of the domains are strategically integrated creating quality learning experiences for students.	All domains are interwoven in a sophisticated way in the design and delivery of a cohesive curriculum for all students.
		Curriculum planning and practice for cohorts of students is undertaken as something separated from System Frameworks and the School Strategic Plan.	Any discrepancies between current priorities in the School Strategic Plan and System Frameworks have been identified.	Whole school curriculum planning and practice demonstrates the interconnectedness between the School Strategic Plan, System Frameworks and school improvement.	Whole school curriculum planning and practice is based on the local context and interconnects with the School Strategic Plan and an agenda of continuous school improvement.
	Assessment	Students require structured support to develop the necessary knowledge and skills to manage and monitor their learning.	Teachers provide support for students to monitor and manage their learning.	Students have opportunities to monitor and manage their learning through structured support.	All students are equipped to monitor and manage their learning.
Assessment for teaching (for, of and as learning) is not explicitly planned. Assessment of learning (summative) remains the focus.		Assessment for teaching (for, of and as learning) is being planned with a focus on identification of effective assessment strategies.	Assessment for teaching (for, of and as learning) is planned for at the whole school level and for cohorts of students using a range of data. Parents and students receive regular information on strengths and areas for improvement/future learning.	All teachers use assessment for teaching (for, of and as learning) to provide individualized learning. Learning portfolios enable ongoing information sharing between teachers, students and parents. Evidenced-based valid and consistent judgments are made through moderation.	
ORGANISATIONAL STRUCTURES	Current organizational structures all limit flexibility within student groupings and roles and responsibilities of teachers. Student learning and welfare are managed separately.	Current organizational structures are being examined and options are developed and analysed to identify structures that will better support student learning.	Flexible organisational structures are being implemented for aspects of the learning program and/or particular groups of students.	Organizational structures enable learning to happen in a range of places at a range of times through flexible use of people, IT and spaces.	
	Learning spaces are confined to the classroom and there is limited use of ICT to support student learning.	A needs analysis informs future developments of physical and electronic learning environments.	Some spaces have been reorganised to create physical and electronic learning environments that support student learning.	All physical and electronic learning environments have been created that complement diverse student learning.	
PERFORMANCE & DEVELOPMENT CULTURE	Professional learning is fragmented and usually short term.	Protocols have been established to increase the effectiveness of professional learning including the importance of reflection on practice.	Teams of teachers plan for learning opportunities that will meet their needs as a group.	Professional learning in collaborative teams focuses on exploration and sharing of learning and teaching practices to continually improve student learning.	
	Professional learning focuses on individual teacher needs rather than agreed school priorities and processes.	School curriculum planning has begun to identify needs and processes for more effective professional learning within the school context.	A schedule of professional learning is established that best meets the needs of all teachers by focusing on their learning needs and grouping teachers accordingly.	The school fosters a culture that values and supports ongoing professional learning, risk taking and focused evaluation	
COMMUNITY BUILDING & PARTICIPATION	The leadership team is exploring how to incorporate the System Frameworks in their school and beginning to raise awareness of these initiatives with staff and school community	The leadership team is building its depth of knowledge of the System Frameworks and beginning to structure opportunities for staff and school community to engage with these initiatives to facilitate whole school curriculum planning.	The leadership team has a deep understanding of the System Frameworks and has created structures and processes that support staff and school community to implement these initiatives.	The leadership team has a meta-view of the System Frameworks and provides clear direction for improving student learning that involves all staff, students and relevant aspects of the local community.	

